



SPECIALTY
FURNITURE

Healthcare Vinyls Collection I



“Specialized Furniture for the Health Care Environment”

www.specialtyfurniture.ca

CHALLENGER



97 SLATE



91 DOVE



905 STEEL



903 FOG



909 RAVEN



902 SEAGULL



805 BARK



802 MOCHA



64 PEARL



609 TAUPE



605 CREAM



54 CITRON



21 MEADOW



31 LAGOON



306 NAVAL BLUE



303 DENIM BLUE

Note: Actual colour may vary from picture shown due to printing limitations. Please request an actual sample if needed.

ASCENT



605 ECRU



91 CRYSTAL GREY



905 SMOKE



9006 GAUNTLET



97 FOSSIL



6006 MUSHROOM



14 CARMINE



405 SANDALWOOD



21 SAGE



208 FERN



24 PHOENIX



34 SEASCAPE



3001 LAKE BLUE



4006 RUSSET



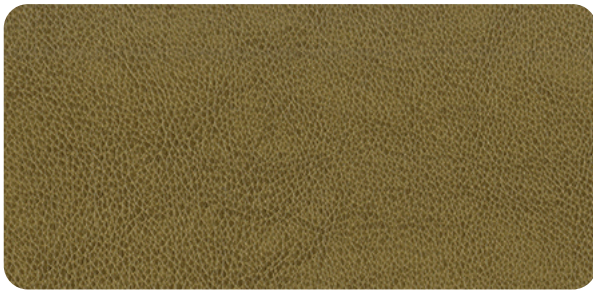
6009 TAUPE



87 DARK TRUFFLE

Note: Actual colour may vary from picture shown due to printing limitations. Please request an actual sample if needed.

CHALLENGER LEATHER LOOK



83 TAN



804 AMBER



88 TOBACCO



98 CHARCOAL

ASCENT LEATHER LOOK



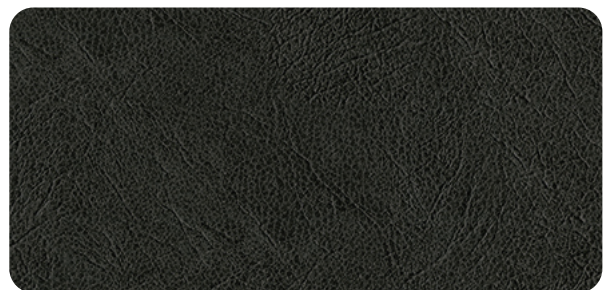
706 FLAX



705 STERLING



708 SADDLE



7009 CHARCOAL DUST

Note: Actual colour may vary from picture shown due to printing limitations. Please request an actual sample if needed.

LINUM



805 BARK



902 FLAX



87 CHESTNUT



97 GUNMETAL

ELYSIUM



97 FOSSIL



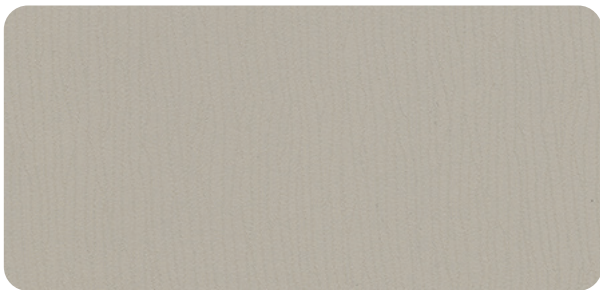
21 SAGE



24 PHOENIX



405 SANDALWOOD



605 ECRU



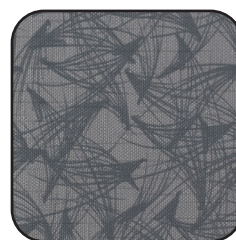
9009 BLACK

Note: Actual colour may vary from picture shown due to printing limitations. Please request an actual sample if needed.

ARC



White Pine



Silver Screen



Nightingale



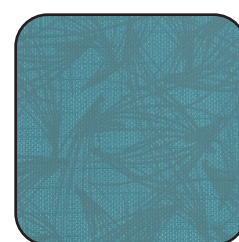
Sunglow



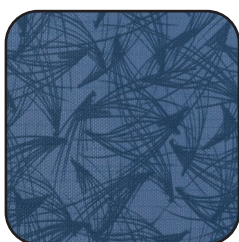
Autumn



Phoenix



Lagoon



Dragonfly



Lakeside



Flora

Note: Actual colour may vary from picture shown due to printing limitations. Please request an actual sample if needed.

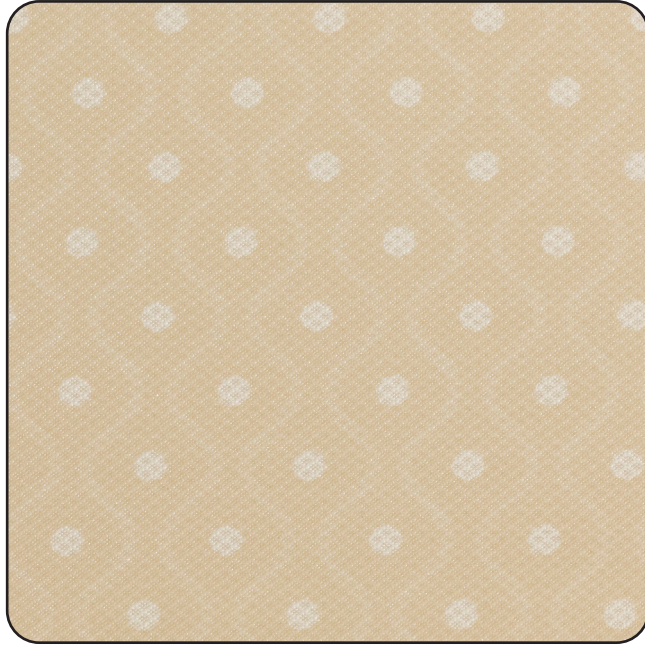
ARISTO



Vapor



Silhouette



White Water



Sisal



Baked Pottery



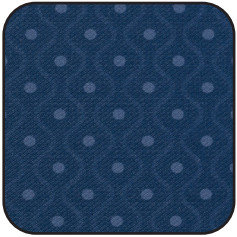
Heat Wave



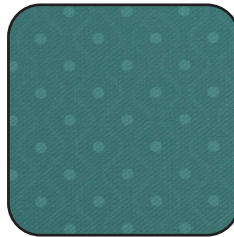
Sangria



Nirvana



Tiger Eye



High Seas



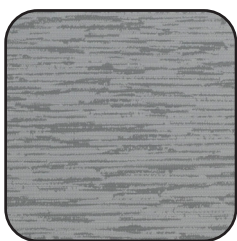
Laurel

Note: Actual colour may vary from picture shown due to printing limitations. Please request an actual sample if needed.

FLAIR



Mineral



Melody



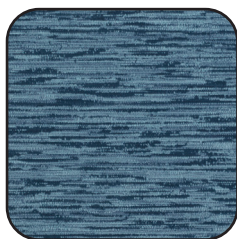
Dusk



Golden Poppy



Adobe



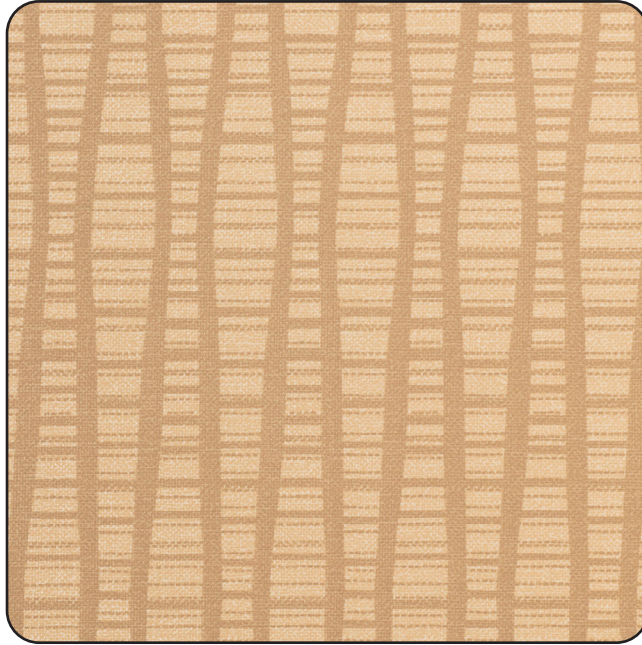
Blue Ribbon



Red Dawn

Note: Actual colour may vary from picture shown due to printing limitations. Please request an actual sample if needed.

SURGE



Caramel



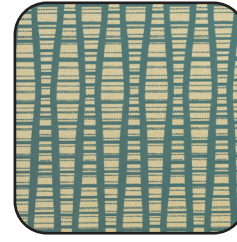
Film Strip



Nile



Bombay



Resort



Waterfall



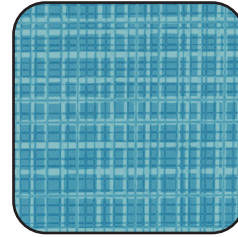
Reservoir

Note: Actual colour may vary from picture shown due to printing limitations. Please request an actual sample if needed.

ABBEY



Pampas



Tropical



Marlin



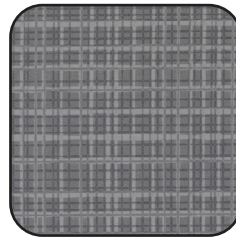
Bison



Shadow



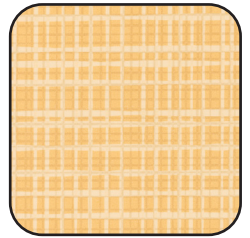
Nobel



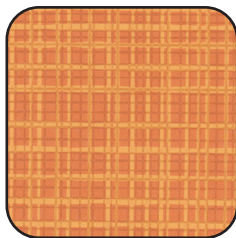
Charcoal



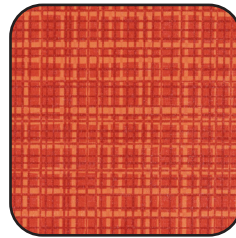
Midnight



Yellow



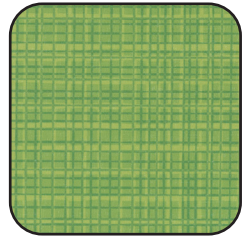
Orange



Red



Brown



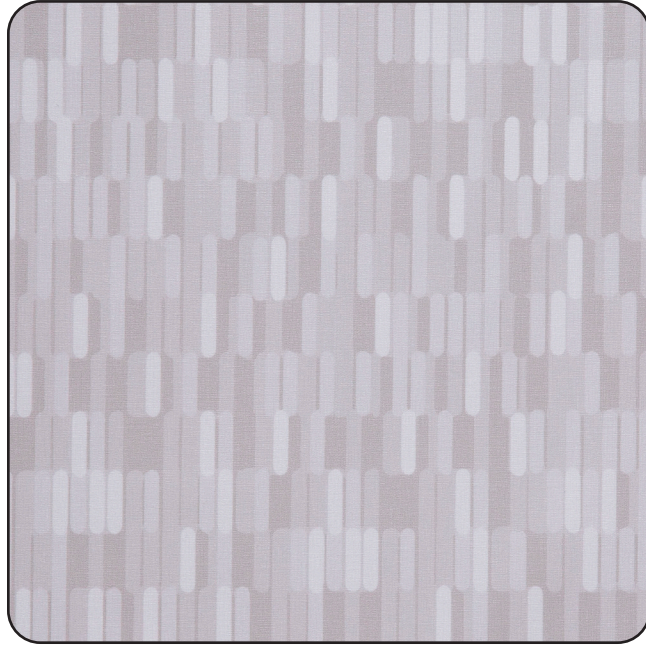
Green

Note: Actual colour may vary from picture shown due to printing limitations. Please request an actual sample if needed.

CINEMA



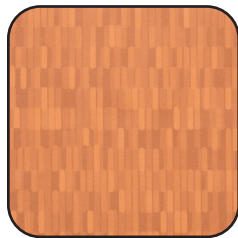
Cocoon



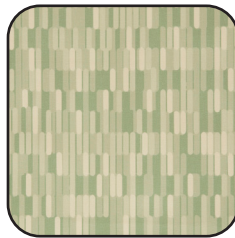
Champagne



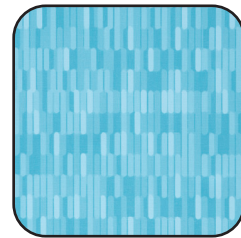
Caramel



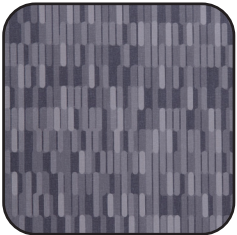
Amaretto



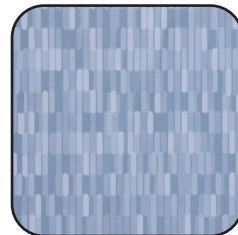
Green Leaf



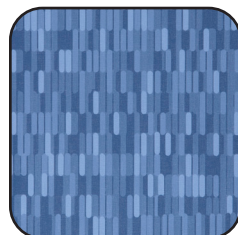
Donegal



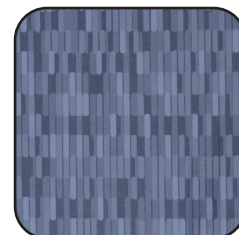
Organic



Phantom



Niagara



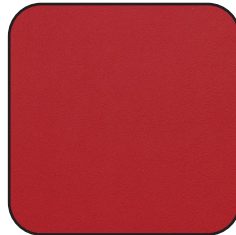
Fossil

Note: Actual colour may vary from picture shown due to printing limitations. Please request an actual sample if needed.

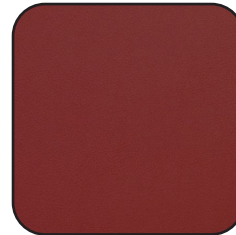
PERSUASION



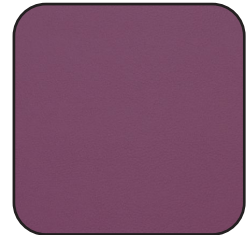
China Red



Matador



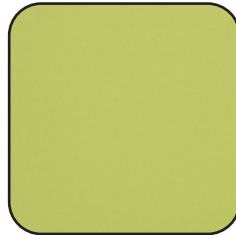
Beet



Aubergine



Concrete



Citronella



Peapod



Jalapeno



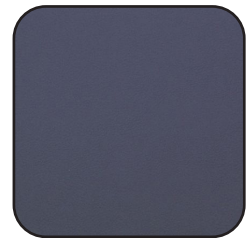
Iron



Sky Dive



Cortez



Meridian



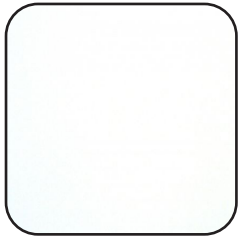
Blueberry



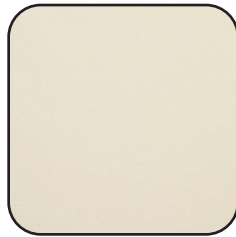
Onyx

Note: Actual colour may vary from picture shown due to printing limitations. Please request an actual sample if needed.

PERSUASION



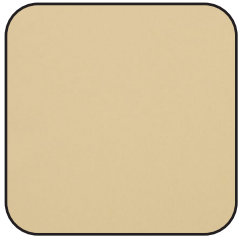
Chiffon



Bisque



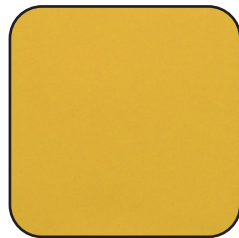
Mink



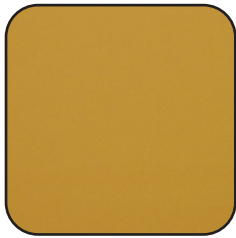
Sand



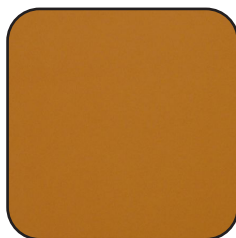
Limon



Maize



Butterscotch



Curry



Badger



Café



Otter



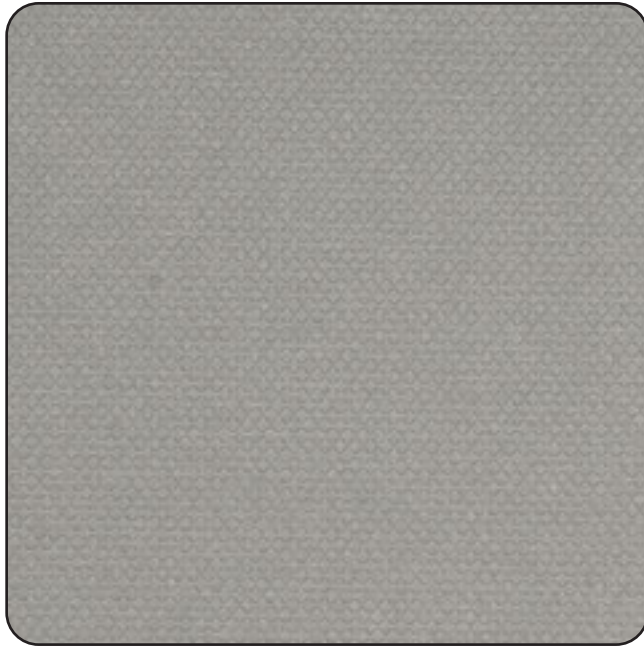
Pumpernickel



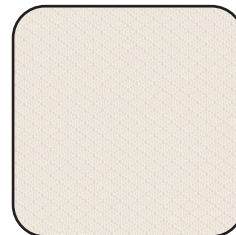
Tiger Lily

Note: Actual colour may vary from picture shown due to printing limitations. Please request an actual sample if needed.

VERVE



Chrome



Mist



Cafe



Polished Metal



Honey



Nectarine



Glacier



Reflection



Jet Set



Ruby Slippers



Keylime

Note: Actual colour may vary from picture shown due to printing limitations. Please request an actual sample if needed.

PHOENIX



Snowflake



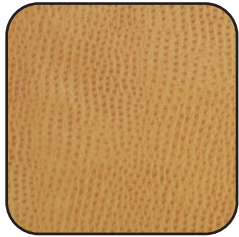
Fog



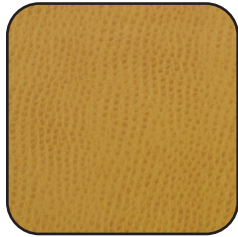
Cherry



Ruby



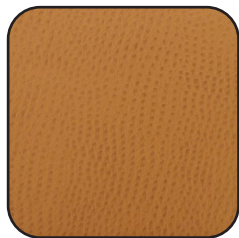
Chutney



Ochre



Rope



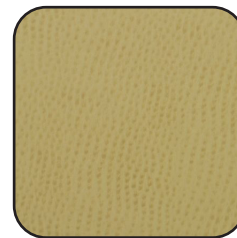
Outback



Chestnut



Chocolate Chip



Willow



Drizzle



Poseidon



Rhino



Caviar

Note: Actual colour may vary from picture shown due to printing limitations. Please request an actual sample if needed.

VIBE



Lime



Grasshopper



Clover



Cornerstone



Cocoa



Mermaid



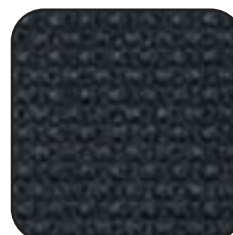
Ballpoint



Cityscape



Bombay Blue



Anchor

Note: Actual colour may vary from picture shown due to printing limitations. Please request an actual sample if needed.

VIBE



Irish Linen



Mushroom



Hammock



Flax



Cornsilk



Kernal



Alchemy



Yukon



Clementine



Sunset



Indian Summer



Sorbet



Grapevine

Finishes

Note: Actual colour may vary from picture shown due to printing limitations. Please request an actual sample if needed.

CANYON



Oatmeal



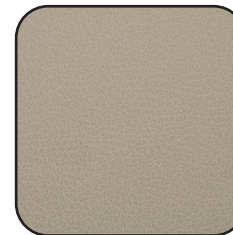
Carbon



Devon



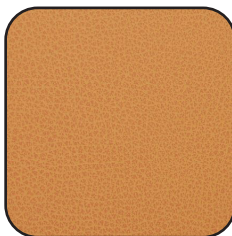
Pavement



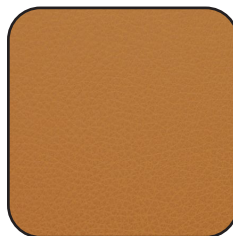
Greystone



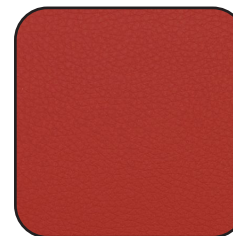
Atlantic



Pumpkin



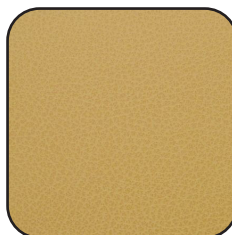
Nutmeg



Red Rock



Cordovan



Nugget



Rustic



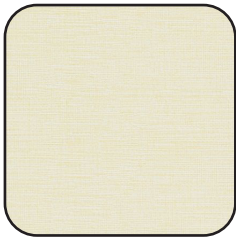
Mudslide



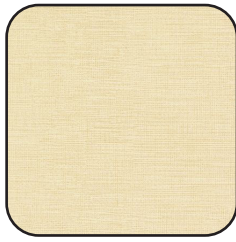
Nightfall

Note: Actual colour may vary from picture shown due to printing limitations. Please request an actual sample if needed.

NATURAL LINEN



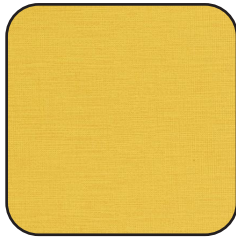
Pearl



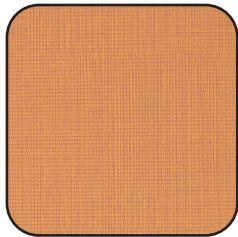
Tan



Burnt Orange



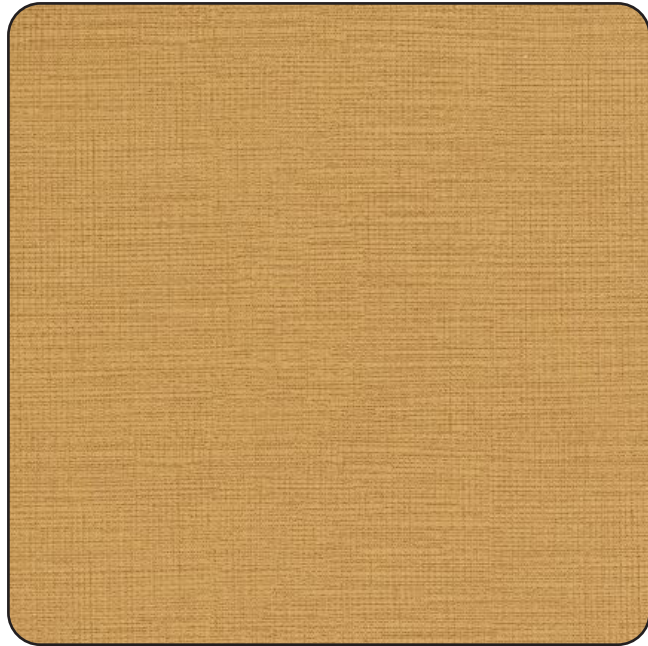
Haystack



Sunset



Cayenne



Potters Clay



Ganache



Gray



Charcoal



Moss



Storm



Navy

Note: Actual colour may vary from picture shown due to printing limitations. Please request an actual sample if needed.

Vinyl Upholstery

PATTERN NAME / NOM DE DESSIN	CHALLENGER	ASCENT	ELYSIUM	LINUM
ABRASION [†] / RÉSISTANCE À L'ABRASION [†]	Exceeds 1,500,000 Double Rubs <i>Excède 1,500,000 double frottements</i>			
ANTI-BACTERIAL / ANTI-BACTÉRIEN	Passes [Passe] AATCC 147-2011			
ANTI-PINKING [‡] / ANTI-ROSISSEMENT [‡]	ASTM E1428 15A			
CONTENT / COMPOSITION	100% Polyvinyl Chloride (PVC) <i>100% Chlorure de Polyvinyle</i>			
BACKING CONTENT / COMPOSITION DU SUPPORT	100% Polyester			
CLEANING CODE / CODE DE NETTOYAGE	W - Clean fabrics with water-based cleaning agents or water based foam <i>W - Nettoyer les tissus avec des agents de nettoyage à base d'eau ou une mousse à base d'eau</i>			
COLD CRACK / FISSURATION À FROID	-55°C [-67°F]			
COLORS / COULEURS	40	27	7	4
CROCKING / DÉGORGEMENT	AATCC 8: Dry [Sec] = Class(e) 5, Wet [Mouillé] = Class(e) 5			
ELONGATION / ALLONGEMANT	Passes [Passe] ASTM D751: Weft [trame] 116%, Warp [chaîne] 64%			
FIRE RETARDANCY [§] / RÉSISTANCE AUX FEUX [§]	CALTB117-2013, IMO FTP Code 2010 - Part 8, MVSS302, NFPA 260 Class(e) 1, UFAC Class(e) 1			
RAILROADED / DIRECTION DU TISSU	No (Non)			
MILDEW RESISTANCE / RÉSISTANCE À LA MOISSISSURE	ASTM G21 - 13			
PROTECTIVE FINISH / REVÊTEMENT PROTECTEUR	Endurepel Armour			
SEAM SLIPPAGE / GLISSEMENT DE LA COUTURE	Passes [Passe] ASTM D751: Weft [trame] = 64 lbs., Warp [chaîne] = 67 lbs.			
TEAR STRENGTH / RÉSISTANCE À LA DÉCHIRURE	Passes [Passe] ASTM D2261: Weft [trame] = 13 lbs., Warp [chaîne] = 10 lbs, Passes [Passe] ASTM D751: Weft [trame] = 12 lbs., Warp [chaîne] = 10 lbs			
THICKNESS / ÉPAISSEUR	1.10 mm			
UV/LIGHTFASTNESS / RÉSISTANCE AUX RAYONS DE LUMIÈRE	AATCC 16.3 - Grade 4.0 (1,500 hours) [heures]			
WEIGHT / POIDS	20.64 oz./yd ² [par verge carrée] 30.96 oz./lin. yd [par verge linéaire]			
WIDTH / LARGEUR	55 in. (140 cm)	54 in. (137cm)	54 in. (137 cm)	54 in. (137 cm)
ROLL SIZE / TAILLE DU ROULEAU	30 yd (vg); (27 m)			

* This information is offered for your general guidance only. It's accurate to the best of our knowledge and is not intended to relieve the user from their responsibility to investigate and understand other pertinent sources of information and to comply with all laws and procedures applicable to the safe handling and use of this material.

† Results above 100,000 double rubs have not been shown to be an indicator of increased lifespan.

‡ Ennis warrants these fabrics to not become unserviceable due to mildew and pinking and are certified to pass ASTM E1428 15A. Any claims regarding mildewing and/or pinking require evidence that any foam used was similarly certified to prevent such mildew formation or pinking. Ennis fabrics expressly excludes claims from which mildew or pinking originated from improper foam lacking such certification.

§ This term and any corresponding data refer to typical performance in the specific tests indicated and should not be construed to imply the behaviour of this or any other material under actual fire conditions.

* Ces renseignements sont offerts à titre consultatif seulement. Ils sont précis, au mieux de nos connaissances, et ne sont pas destinés à dégager l'utilisateur de sa responsabilité d'étudier et de comprendre les autres sources pertinentes de renseignements, ni de se conformer à toutes les lois et procédures relatives à la manipulation et à l'utilisation sécuritaires de ce matériau. La décision finale du type d'application du produit appartient à l'utilisateur.

† Les doubles frottements supérieurs à 100 000 ne sont pas un indicateur d'une durée de vie accrue pour un produit.

‡ Ennis garantit que ces tissus ne deviendront pas inutilisables en raison de la moisissure et de l'effilochage et qu'ils sont certifiés conformes à la norme ASTM E1428 15A. Toute allégation relative à la formation de moisissure ou à l'effilochage nécessite la preuve que toute mousse utilisée a été certifiée de manière similaire pour prévenir la formation de moisissures ou l'effilochage du tissu. Ennis Fabrics exclut expressément toute réclamation relative à la formation de moisissure ou à l'effilochage du tissu causés par une mousse inadéquate dépourvue d'une telle certification.

§ Les résultats rapportés d'après la norme ci-dessus ne définissent pas nécessairement les risques que représente ce matériau dans des conditions réelles d'incendie.

Finishes

ARC, ARISTO, FLAIR, SURGE, VERVE, ABBEY, CINEMA VINYLs - PROPERTIES AND CHARACTERISTICS

MorCare™ has been developed to meet the increased demands of hospital, contract and institutional use.

Chemical Resistance

MorCare™ offers enhanced resistance to most of the common chemicals used for sterilization and cleaning in medical environments. MorCare will resist, without serious discoloration, the repeated action of normal dilutions of chlorine bleaches, ammonia based cleaners, excluding Quaternary Ammonium Compounds and Phenolics, as well as many common oxidizing and reducing chemicals.

Bacterial Resistance

MorCare™ protected products contain both antibacterial and antimicrobial agents that will provide resistance the following bacteria and many others, when tested using the AATCC method 147-2004: Staphylococcus Aureus Klebsiella Pneumoniae.

Durability

MorCare™ protected vinyl will keep and maintain its new appearance under heavy duty use far longer than normal vinyl upholstery materials. It will withstand 500,000 double cycles using the Wyzenbeek #8 cotton duck test method. MorCare offers high resistance to normal scrapes and scuffing.

Cleanability

With MorCare™ Protection, it is easier to clean freshly soiled vinyl. This is achieved by prompt energetic washing using a mild soap solution. Previously soiled areas, where soiling has not penetrated the vinyl surface, can be washed and scrubbed with a sponge or soft brush using a mild non-abrasive cleaner.

Flame Resistance

Manufactured to meet the following flammability* requirements:

- UFAC Class 1
- California 117, Section E
- FMVSS 302
- NFPA 260

MorCare™ Vinyl Specifications

- Standard Weight: 32 oz/linear yd.
- Nominal Total Thickness: 0.040 in.
- Finished Width: 54 in.
- Roll Length: 30 yd.
- Sulfide Stain Resistant
- Urine Stain Resistant
- Mildew & Bacteria (Staph) Resistant
- Enhanced Bleach Resistant
- 100% Polyester Loop Knit Backing
- Anti-Static Slip Finish
- Oil Resistant
- Abrasion Resistant: No significant wear after 500,000 double rubs with #8 cotton duck using the Wyzenbeek test method.

* This term and all corresponding data refer to typical performance in the specific test indicated and should not be construed to imply the behavior of this or any other material under actual fire conditions.

Vinyl Upholstery

ARC, ARISTO, FLAIR, SURGE, VERVE, ABBEY, CINEMA VINYLs - CARE AND CLEANING

MorCare™ upholstery vinyl is easy to clean. To prevent build up of dirt and contaminants, which may cause permanent staining, periodic cleaning is highly suggested. The frequency of cleaning is dependant upon the environmental conditions the MorCare™ product is subjected to.

Antiseptic Surface Treatment

Bleach can be diluted up to a 9:1 ratio (10%). Liberally apply diluted disinfectant using a sponge, rinse with cold water several times, and then wipe dry. Repeat if necessary. Federal regulation requires that guidelines on the bleach label need to be followed for antiseptic or antimicrobial purposes.

The following disinfecting cleaners are suitable for use on MorCare vinyls:

Asepticare TB II	Lysol Foaming
Birex	Precise (Caltech)
Cavicide (Metyrex)	Super Sani-Cloth PDI
CaviWipes	Virex 256
Citrace (Caltech)	Wex-cide
Dispatch	Virox 5 JohnsonDiversity Canada

Normal Office/Household Use

Most stains can be easily cleaned using warm, soapy water and clear water rinses. Moderate scrubbing with a medium bristle brush will help to loosen soiling material from the depressions of embossed surfaces. For more stubborn stains, use Formula 409® commercially available mild detergent in accordance with the manufacturer's instructions. When opening a new container, please test the cleaner in an inconspicuous area as cleaner manufacturers may change formula without notice. Morbern cannot be responsible when unknown changes are made by the manufacturer of the cleaner to their formulations between 6 month verification intervals. Full strength rubbing alcohol or mineral spirits may be tried with caution if the commercially available cleaners do not work. Indiscriminate use of strong solvents can severely damage or discolor MorCare vinyl

Other Common Stains

Ballpoint Ink: Ink spots will stain MorCare™ vinyl permanently. Immediately wipe with rubbing alcohol in a well ventilated area. This will remove much of the stain.

Oil Based Paint: The use of turpentine in a well ventilated area will remove fresh paint. Dried paint must be moistened carefully with a semi-solid gel type stripper so that the softened paint can be gently scraped away. Rinse with soap and water. Caution: Direct contact with the paint strippers will remove the print pattern on the vinyl. Wear gloves for protection while cleaning.

Latex Paint: Fresh paint can be wiped off with a damp cloth. Hot soapy water will normally remove dried latex.

Tar, Asphalt: Remove immediately, prolonged contact will result in a permanent stain. Use a cloth lightly dampened with mineral spirits or kerosene and rub stain gently, working from the outer edge of the stain towards the center in order to prevent spreading. Rinse with soap and water.

Crayon, Mustard, Ketchup: Sponge with mild soap and water. For stubborn stains that have set, use a cloth soaked in diluted mild detergent with gentle rubbing. Any remaining stain should be washed with diluted bleach. Rinse with cold water.

Chewing Gum: Scrape off as much as possible with a dull knife. Rubbing with an ice cube will assist and make it easier to remove when scraping. The remaining gum should be removed in a well ventilated area using a cloth saturated with mineral spirits. Use light rubbing, rinse thoroughly with clean water.

Lipstick, Grease, Oil, Shoe Polish: Apply small quantity of mineral spirits with a soft cloth and gentle rubbing. Take care not to spread the stain by smearing it beyond its original source. Immediate removal of shoe polish is suggested or permanent staining will occur. Rinse thoroughly with clean water.

Candy, Ice Cream, Fruit Stains, Liquor, Wine, Soft Drinks: Use clear, lukewarm water and a sponge repeatedly. Loose material should be gently scraped away with a dull knife. Any soiled area remaining after drying should be gently rubbed with a cloth spotted with a small quantity of alcohol. Rinse thoroughly with clean water.

Blood: Rub out any spots with a clean cloth soaked in a cool water. If stubborn spots remain, use household ammonia and rinse repeatedly with clean, wet cloth. Do not use hot water or soapsuds, this will set the stain.

Nausea Stains: Sponge the stain area with soapy water containing diluted bleach until the stain is removed. Rinse thoroughly with clean water.

Urine Stains: Sponge with soapy water containing a small amount of household ammonia. Rinse thoroughly with clean water.

Surface Mildew: Wash with diluted bleach, use a soft brush for stubborn growth. Rinse with clear, cold water.

MorCare™ products will pass IMO A.652(16) when tested with suitable components
Morbern is an ISO 9001:2008 Certified Producer

PERSUASION, CANYON, VIBE, PHOENIX, & NATURAL LINEN VINYLs - PROPERTIES AND CHARACTERISTICS

Composition

Face: 100% PVC
Back: 100% Polyester Knit

Characteristics

New Colors Added
Luxurious Look and Feel
Anti-Microbial
Anti-Bacterial Protection
Mildew Resistant
High Abrasion Resistance
Easily Cleaned
Scratch Resistant
Moisture Barrier
Exceptional Color Fastness
Width: 54 in.

Applications

Healthcare
Hospitality
Contract/Office
Education
Government
Automotive
R.V.
Food Service
Marine
Residential

Properties

Mildew Resistant
CFFA-120/ASTM G21 - 96
Anti-Bacterial
CFFA-300/AATCC Test Method 147-1998
Anti-Microbial
CFFA-300/AATCC Test Method 147-1998
Bleach Resistant
10% Dilution
Resilience^{SR}/Stain Resistant
Sulfide Stain Resistant
Superior Abrasion
CFFA-1A/Method ASTM D4157
(250,000+ Double Rubs, Wyzenbeek)
UV Resistance-**650 Hours**
AATCC 16-2012. (option 3)/CFFA-2 (Xenon Arc)
Seam Strength/Tack Tear
ASTM D751-06 W45 F45
Cold Crack -20° F
CFFA-6 No. 101 A-Method 5874
Tear Strength by Tongue
CFFA-16b/ASTM D751-06
Breaking Strength
CFFA-17/ASTM D751-06
Flex Resistance
25,000 Cycles
Coating Adhesion
CFFA-3/ASTM D751-06
Crocking Resistance
CFFA-7/AATCC 8-2013 Wet 5 Dry 5
Blocking
CFFA-4/ASTM D4946

Flame Retardancy*

CAL Tech. 117, Section E	Pass
UFAC - Class 1	Pass
BIFMA, Section 3 & 4	Pass
MVSS302	Pass
NFPA 26	Pass
IMO 2010 FTP Code-MSV 88/26/Add.2 Part 8 (3.1 & 3.2)	Pass

REDUCED ENVIRONMENTAL IMPACT

16P Phthalate Free (includes all Phthalates listed in CAL Prop 65 CPSIA)
Lead Free
BPA Free/TRIS xFree/Formaldehyde Free
Does not contain Conflict Minerals

*This term and any corresponding data refer to typical performances in the specific tests indicated and should not be construed to imply the behavior of this or any other material under the actual fire condition. 12.14

Finishes

Vinyl Upholstery

PERSUASION, CANYON, VIBE, PHOENIX, & NATURAL LINEN VINYL - CARE AND CLEANING

Prompt cleaning is always recommended. Please follow the guide below by type of stain. It is always recommended to rinse or wipe with fresh water after cleaning.

Regular Cleaning and Maintenance.

Clean with mild soap and water then rinse with fresh water and wipe dry with a clean cloth.

- Dirt
- Dust
- Grime

For Food or Oil Based Stains.

Wipe affected area with a soft cloth or soft bristle brush using a non-abrasive cleaner, for example Formula 409™ or Fantastik™. Then rinse the fresh water and wipe dry.

- Ketchup
- Coffee/Tea
- Wine
- Soy Sauce

Healthcare Environments.

Clean/Disinfect the soiled area with a 10% solution of household bleach and water. It is important to rinse the cleaned area with fresh water after applying the bleach solution.

- Blood
- Urine
- Betadine/Iodine

Difficult Stains.

Clean the soiled area with 50% solution of Isopropyl Alcohol (rubbing alcohol) and water. It is important to rinse the cleaned area with fresh water after applying the alcohol solution.

- Mascara/Eye Shadow
- Lipstick

Resilience^{SR} ENDURING PROTECTION

Resilience^{SR} represents the latest in technology in Faux Leather and Vinyl Protection, enhancing performance where it is needed most:

Stain Resistance: With proper care, materials treated with **Resilience^{SR}** can be easily cleaned and will guard against stain maintaining the desired surface appearance for years to come.

Anti-Microbial & Anti-Bacterial Protection: Products treated with **Resilience^{SR}** are engineered to inhibit bacterial growth, as well as fungus, mold and spores, resulting in a more hygienic environment.

Abrasion Resistance: **Resilience^{SR}** provides additional wear properties and surface durability to any Vinyl or Faux Leather, thereby increasing the life of the material.

Resilience^{SR} is not visible, and does not affect the hand of the material. **Resilience^{SR}** is engineered to last, even after repeated cleaning and wear. Specify **Resilience^{SR}** for the most demanding healthcare and hospitality applications.

NOTE: The use of commercial vinyl conditioners and protectants is NOT RECOMMENDED.

The information in this cleaning guide does not guarantee the performance of Resilience^{SR}. This information does not relieve the user from the responsibility of the proper and safe use of the product and referenced cleaning agents.



SPECIALTY FURNITURE

Today's health care environment is becoming more complex and demanding. Specialty Furniture's collection of furniture has been specifically designed for this environment and combines superior design and functionality with quality construction and durability. All the pieces in our collection have been carefully selected and tested to meet our exacting standards.

"Committed to Service" is Specialty Furniture's promise to our customer. Our service begins at the very beginning of your furniture purchase with helpful and educated representatives who can assist you in selection and design and follows through to the very end with friendly and on time delivery and installation. Specialty Furniture knows that without a true commitment to service we would not be able to deliver a reliable and stress free experience to our customer.



Finishes

ph: 1.866.559.5099
fx: 1.866.618.6095
web: *www.specialtyfurniture.ca*
email: *info@specialtyfurniture.ca*

Version 2023-1